

HYPERION-300

Its multifunctionality simplifies your network.

The one you need



You choose from many versions of the device, which we have created in response to the needs of our customers. There are available options with different number of RJ45 and SFP interfaces.

The switch can also act as a serial port server, control devices connected to the relay outputs and provide information about environmental conditions at your facility.



Easy to use

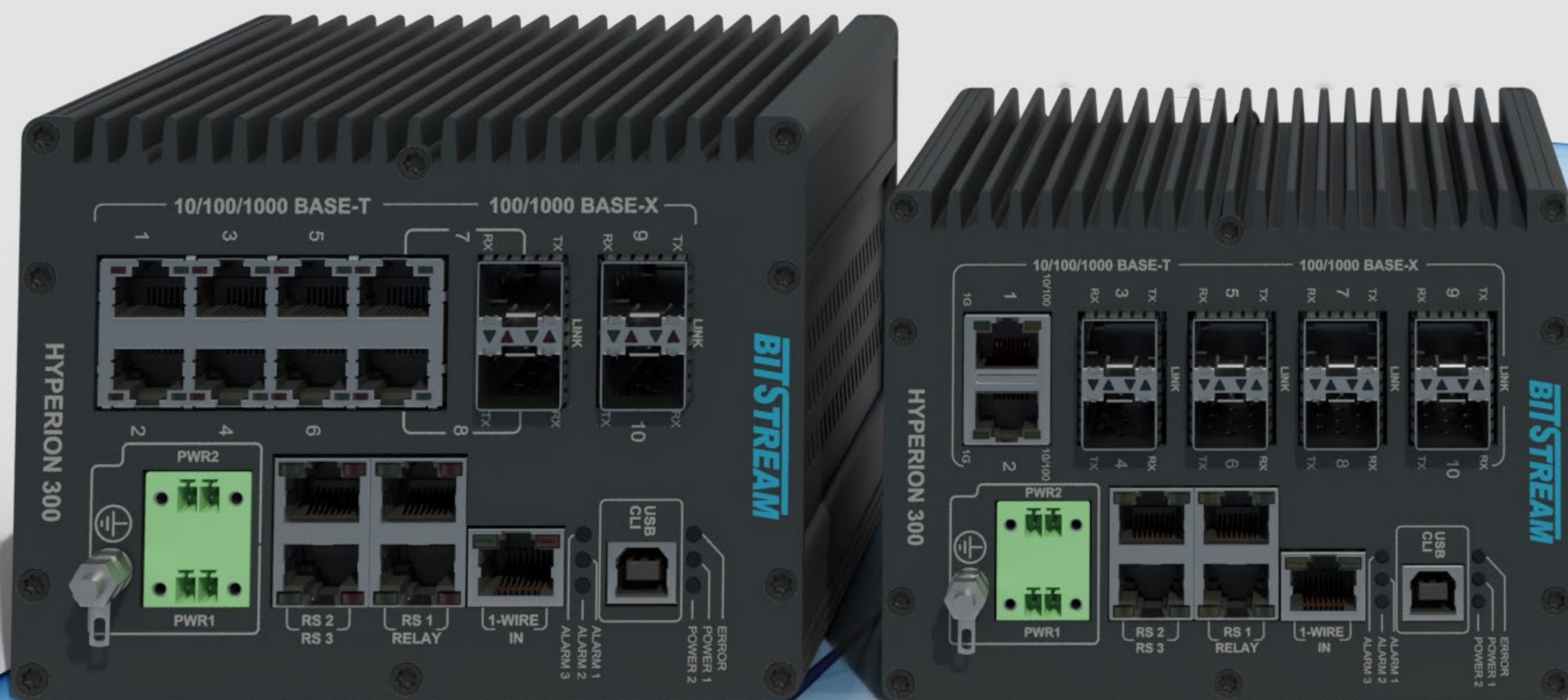
We designed the user interface to be most friendly for the network administrator and installer. From the first moment you can configure the device in an intuitive way.



Secure

Security features such as https, SNMPv3 and SSH allow you to configure and access control for your application. The implemented Storm Control mechanism will avoid unwanted traffic and network congestion.

- ✓ Switch with 2x SFP 100/1000M/2.5Gbps, 2/6x SFP 100/1000Mbps, 8/2x RJ45 10/100/1000Mbps and additional control and measurement interfaces
- ✓ PoE÷PoE+ support up to 30W per port, power on all ports up to 240W, PoE Watchdog
- ✓ Support for ITU-T G.8032 Ethernet ring
- ✓ Power Profile extension IEEE C37.238-2011, IEEE C37.238-2017
- ✓ Synchronous Ethernet G.8261
- ✓ Optional control and measurement functions: 3x RS232/485 virtual-com interface, 1-Wire (T/H), 2x digital inputs, 4x relay outputs
- ✓ Radius - centralized authentication



- ✓ PROFINET protocol support Class A, DNP3 and DLMS
- ✓ Support for Ethernet OAM (Link OAM and Service OAM)
- ✓ SNMPv3 access security, HTTPS, SSH
- ✓ Operating temperature: -40 to +85°C
- ✓ Robust metal enclosure IP-30 DIN
- ✓ Redundant DC power supply